



3 ROOM APARTMENT, 1020 VIENNA

Marina Tower Vienna

Object number: SCHL5

[View and rent online](#)

Located in the Marina Tower ultra-modern apartment with the best facilities and great views of the Danube and the city center. Super infrastructure e.g. in the building concierge, Billa, kindergarten, fitness, direct access to the Danube, the U2, bus

Period	25/06/ - 25/07/2026
Number of persons	2
Total incl. VAT.	€ 3.767,58
Security deposit	€ 2.800,00



Living space

78m²



Maximum occupancy

4 Persons



Complete accommodation [?]

1 Private bathroom 2 Separated bedrooms



12. floor

Elevator available



Check-in

15:00 - 20:00 Clock



Check-out

08:00 - 10:00 Clock

Sleeping options

Bedroom 1



1x Double bed (1,80 m x 2 m)

Bedroom 2



2x Single bed

Descripton of accommodation

This great apartment is located in Vienna's second district and has direct access to the Danube! The Marina Tower building with its 42 floors is one of the highest and most modern residential buildings in Austria. Numerous services await you here, such as concierge service, in-house modern fitness studios, home cinema, kindergarten, Billa and much more. On the large balcony you can sunbathe or enjoy the breath-taking view of the Danube and also the city center/Giant Ferris Wheel while having dinner. The apartment is very high quality home furnishings, all rooms are air-conditioned and centrally controlled.

Distribution of the interior spaces:

A large entrance hall.

Living & dining room (with a comfortable sofa bed for 2 people).

High quality, modern and fully equipped kitchen

2 bedrooms

1 bathroom

1 TOILET

1 large balcony/terrace

Equipment & Features



Basic equipment

- Balcony
- Internet/Wifi
- Private washing machine
- Towels
- Vacuum cleaner
- Cleaning utensils
- Terrace
- TV
- Bedclothes
- Private toilet
- Iron & ironing board
- Hairdryer



Kitchen

- Private kitchen
- Glasses/Tableware
- Dishwasher
- Cooking utensils
- Espresso machine
- Microwave

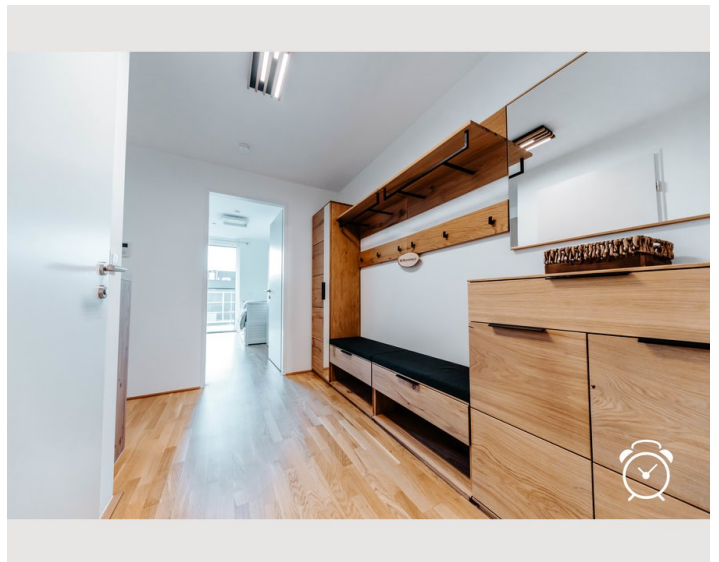
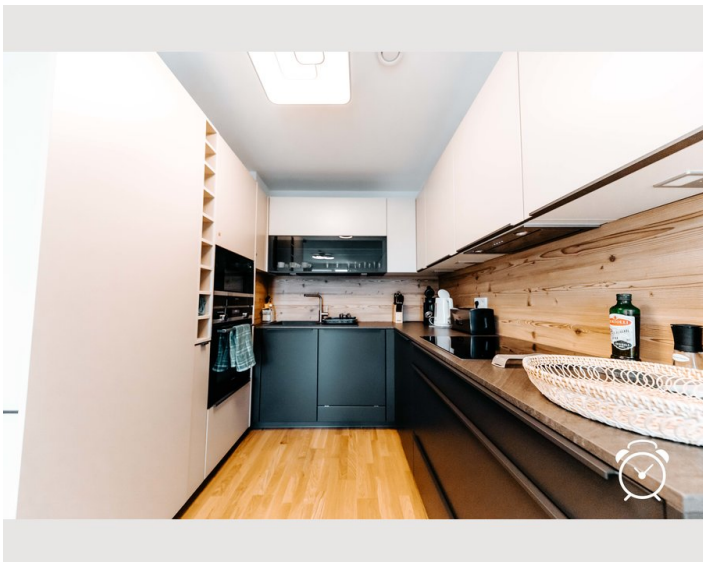
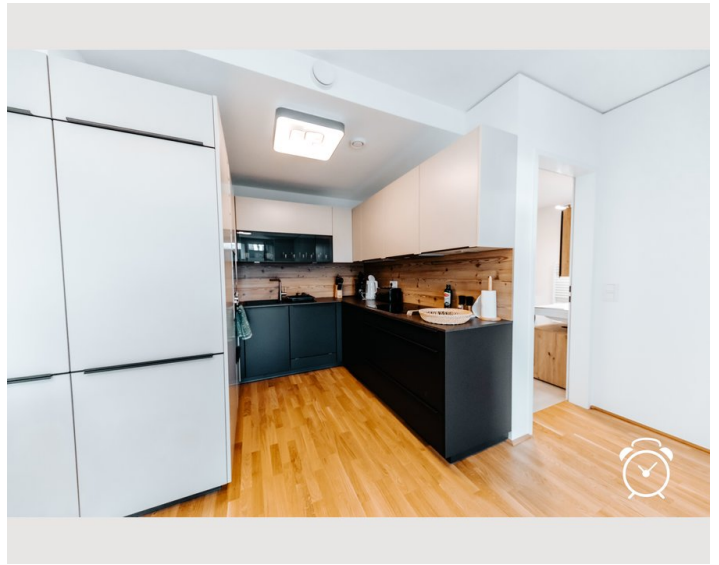
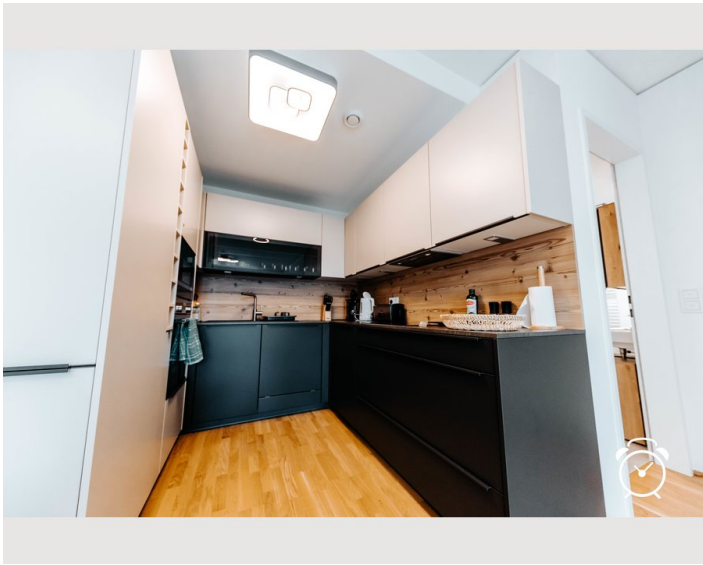
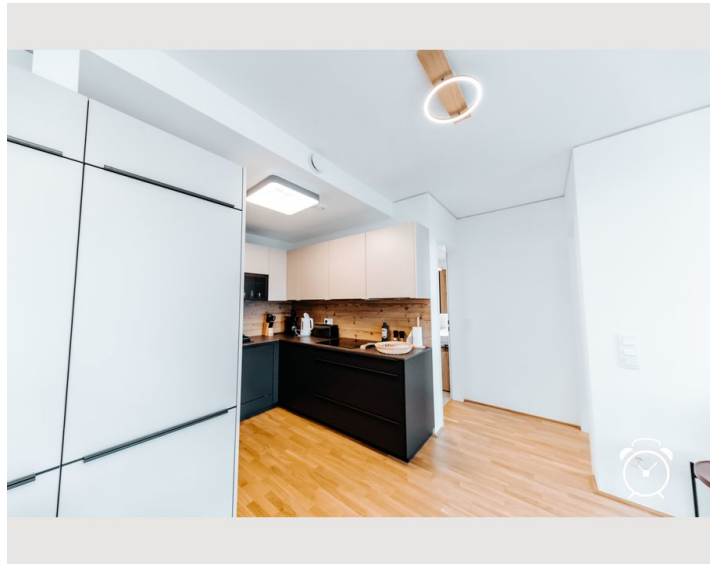
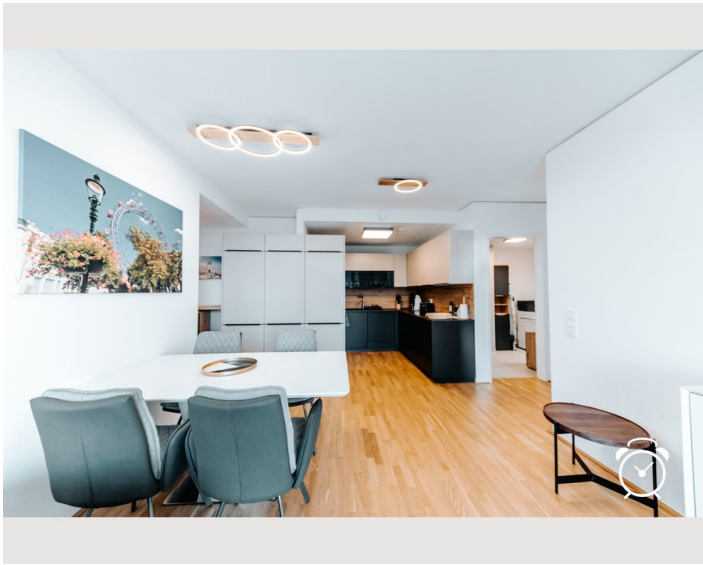
Informations

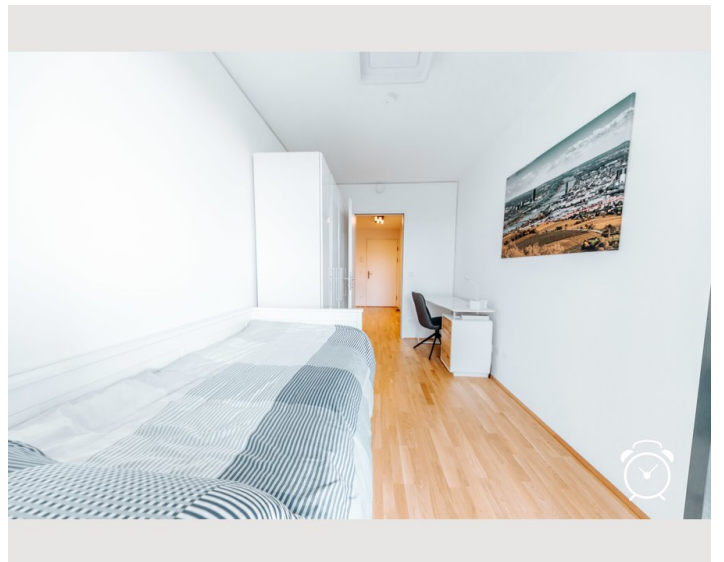
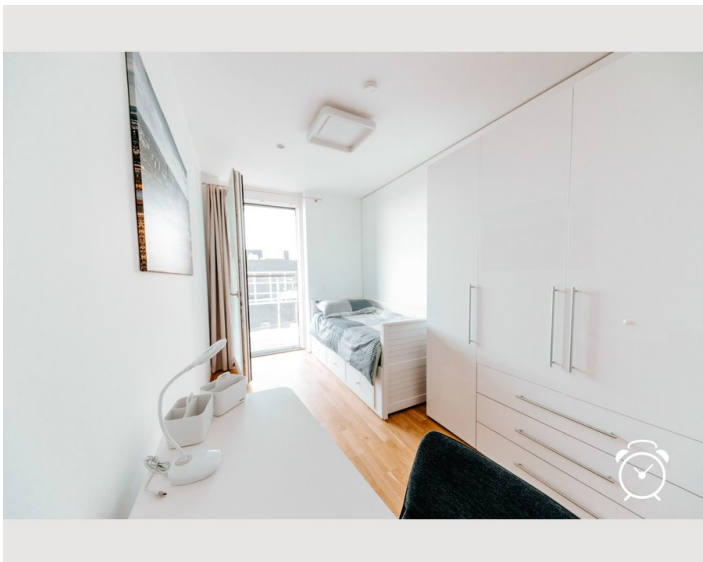
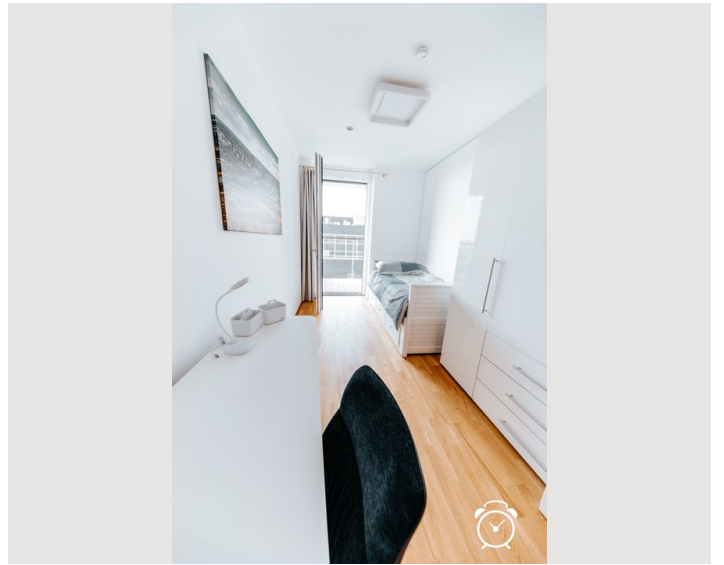
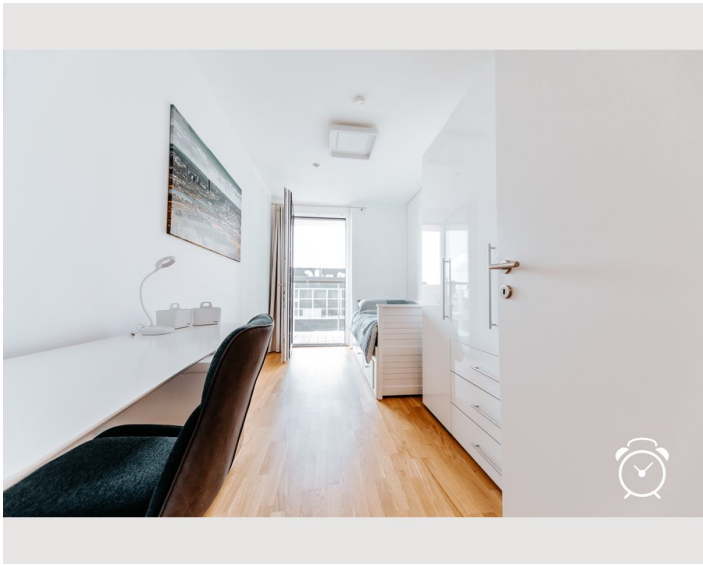
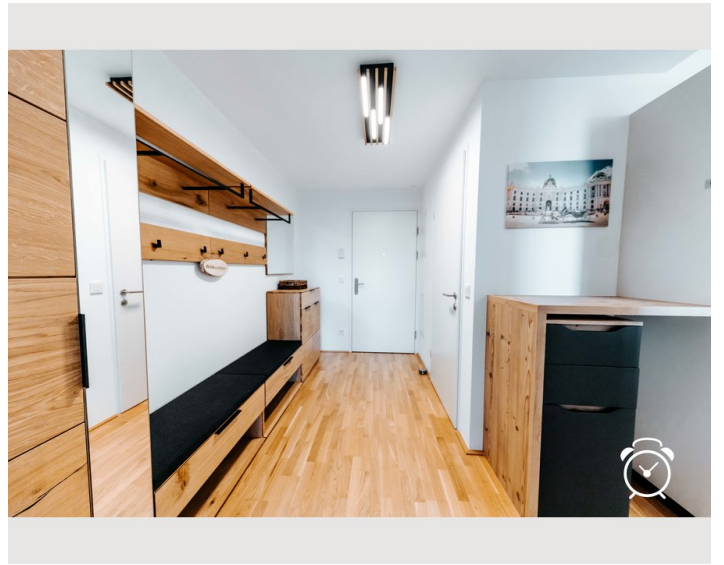
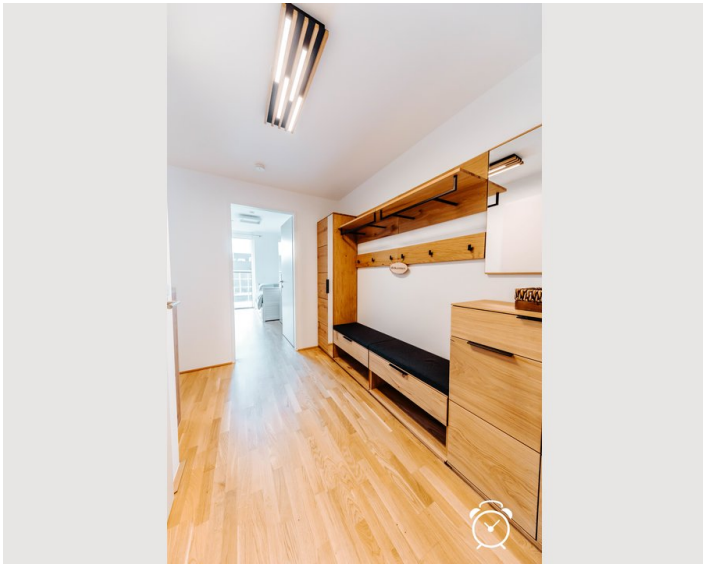
- Suitable for children
- Desk/Workplace
- Regular cleaning at extra cost
- Smoking not allowed
- Pets forbidden
- Bicycle room free of charge

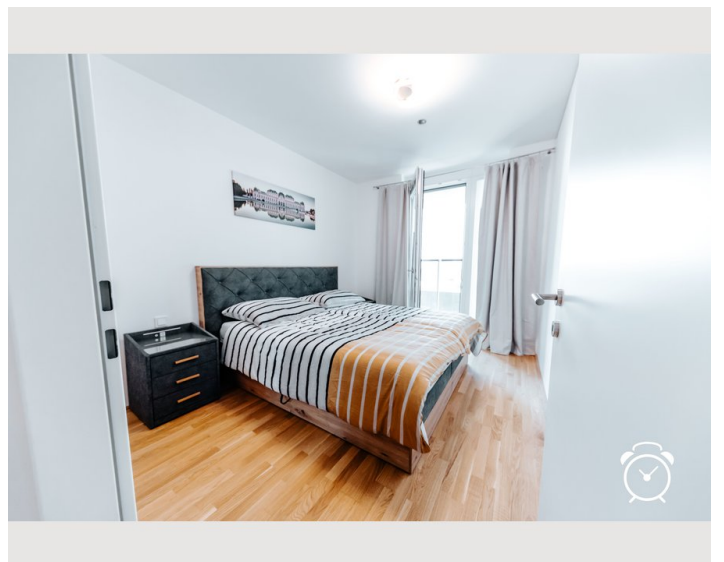
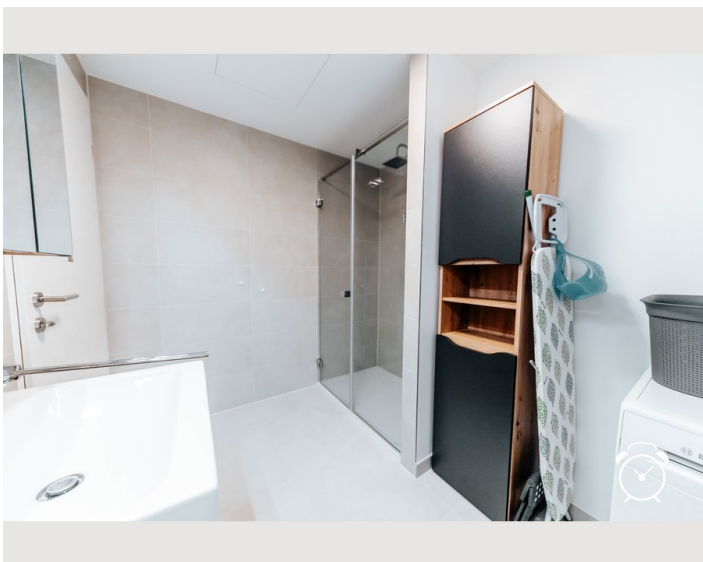
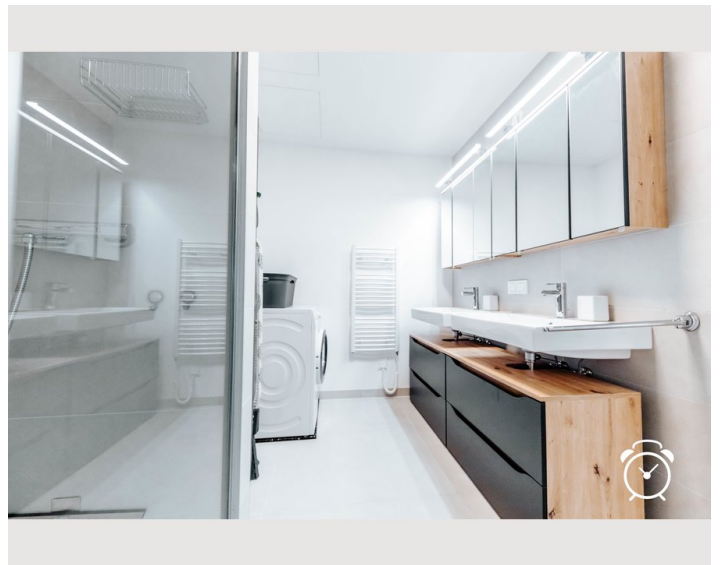
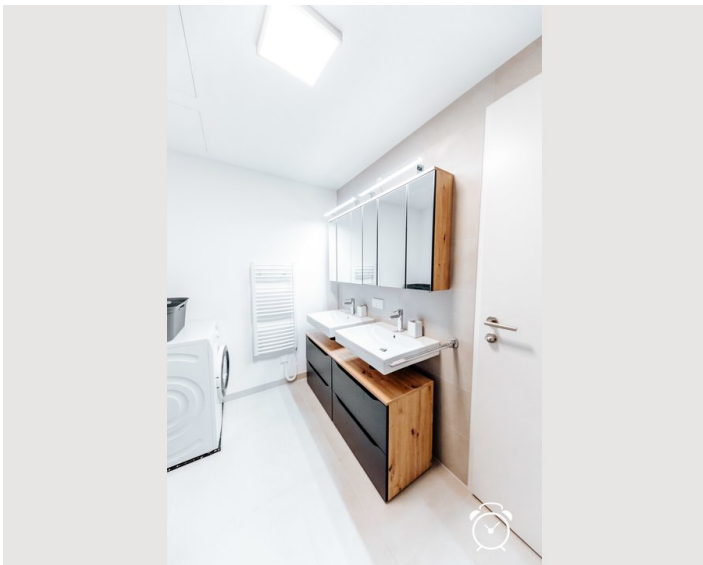
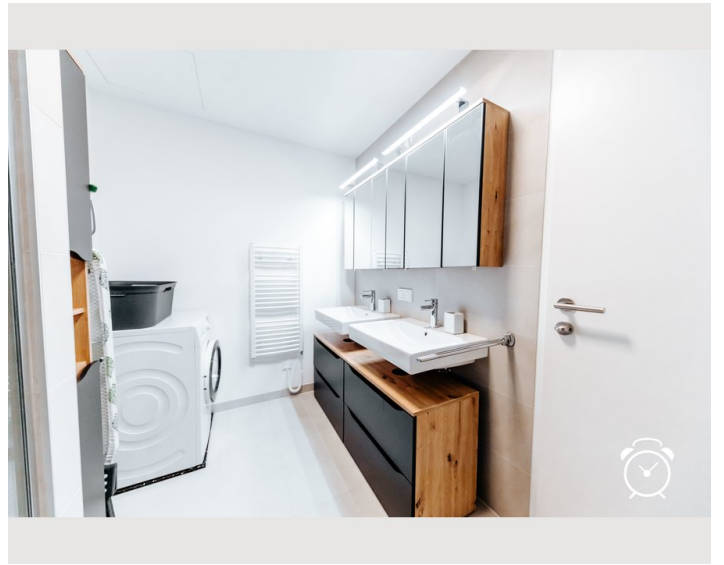
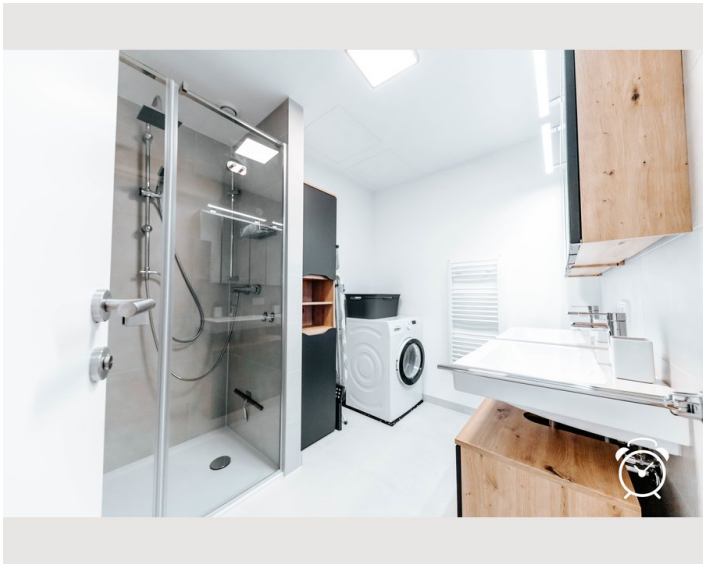
Additional services

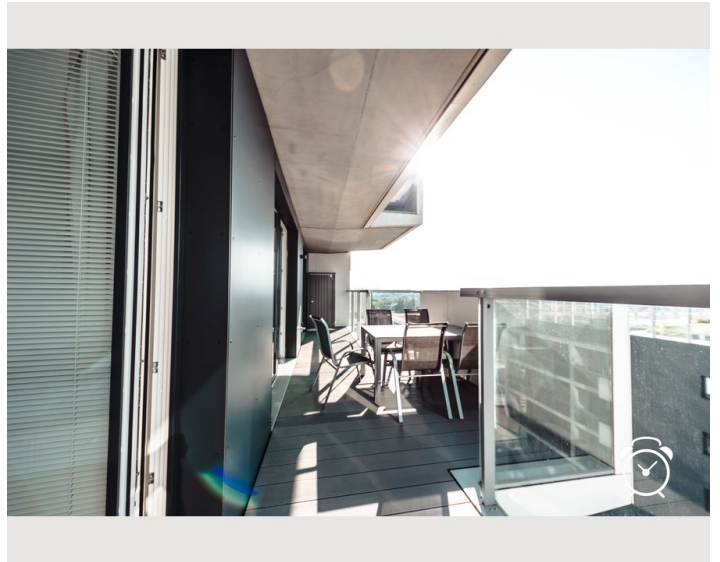
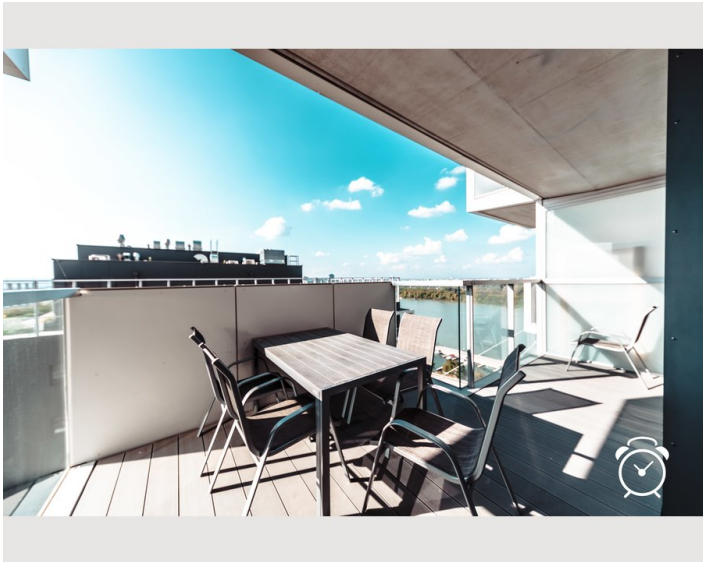
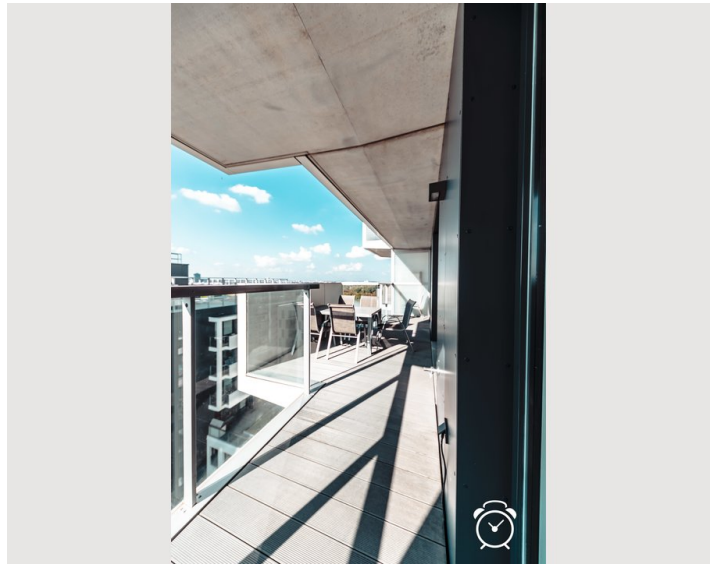
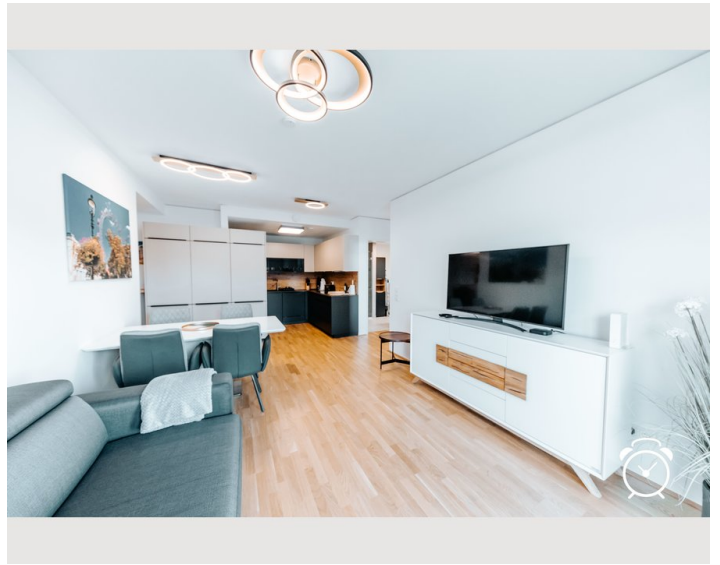
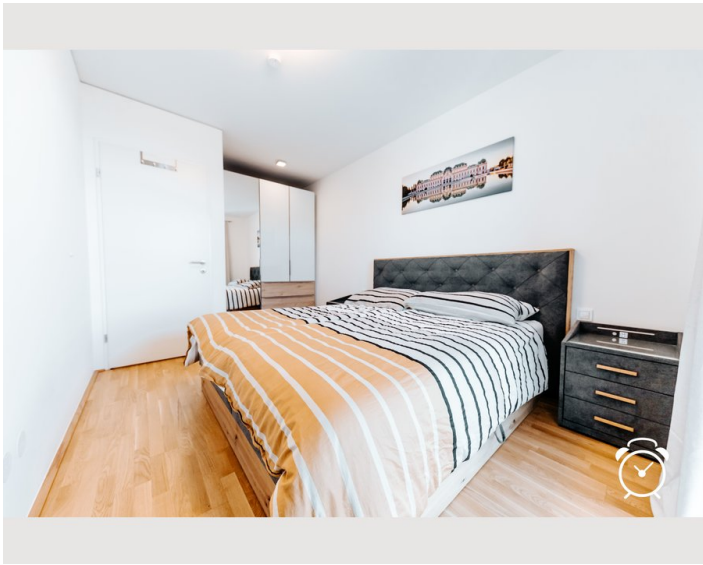
All prices are gross per month - billing is done directly with the lessor.

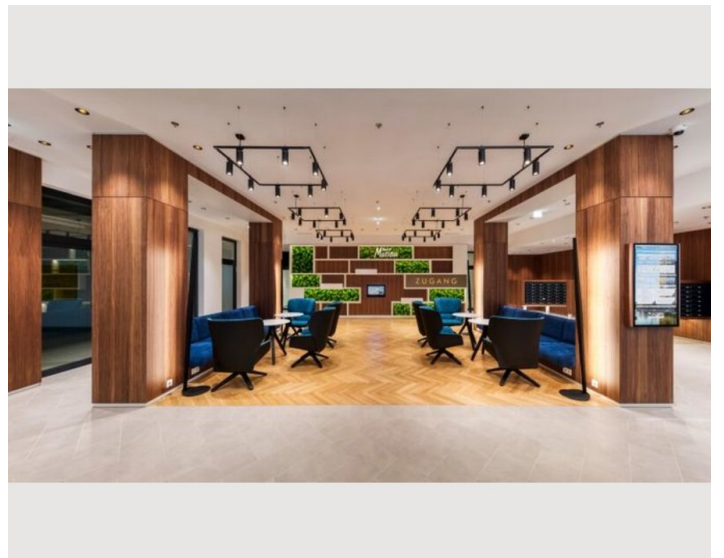
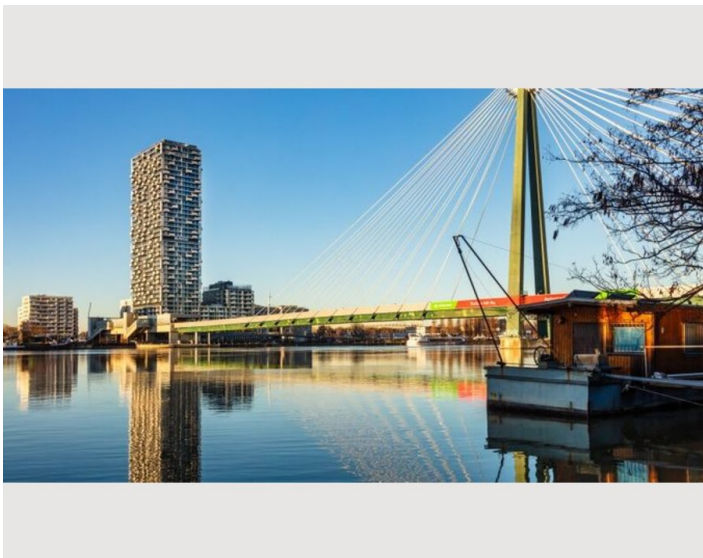
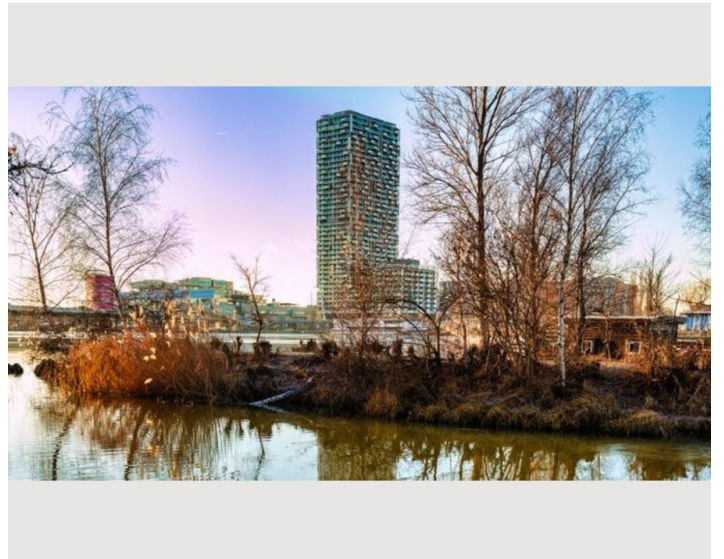
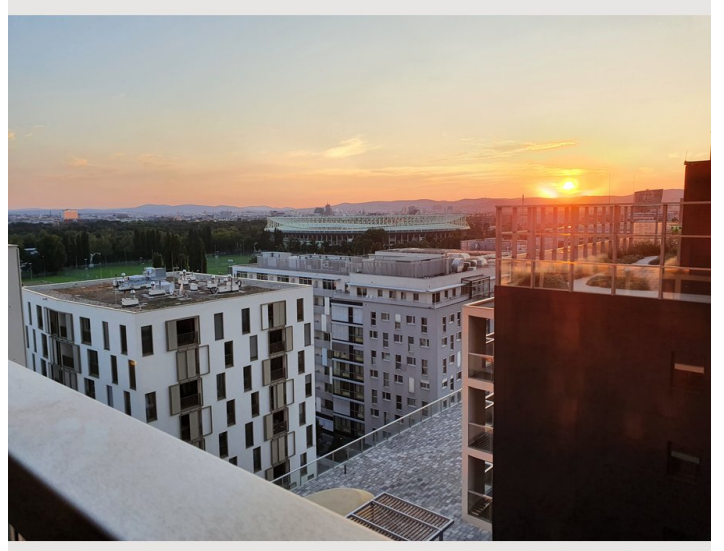
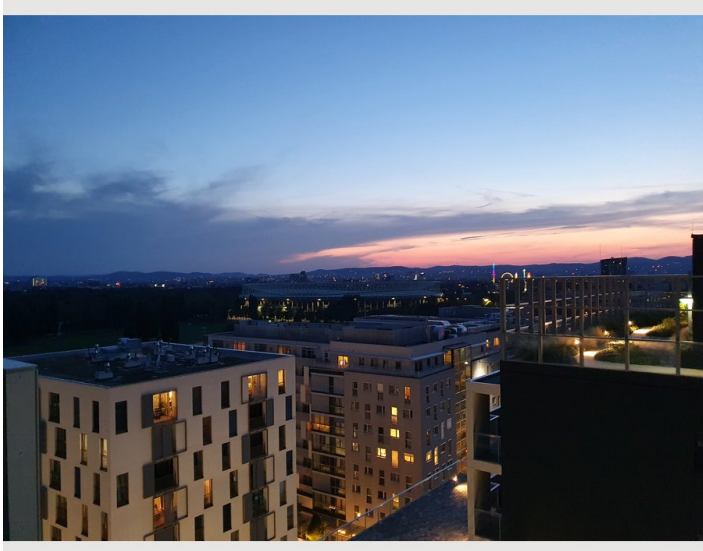
Picture gallery

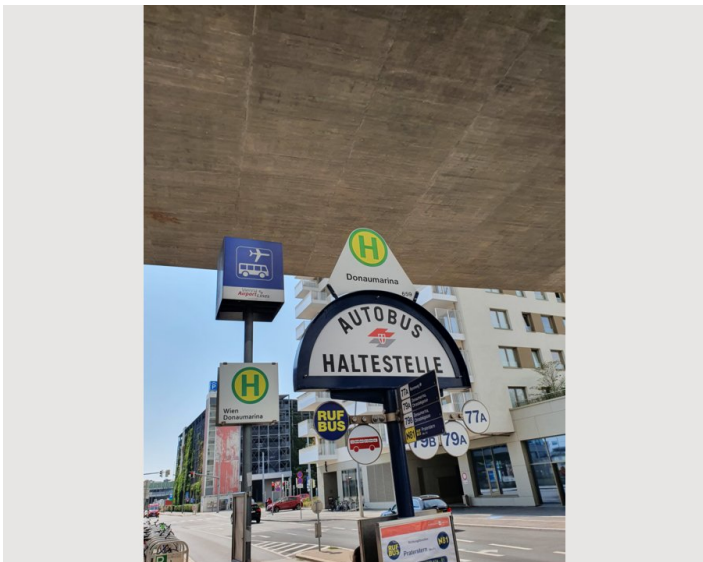
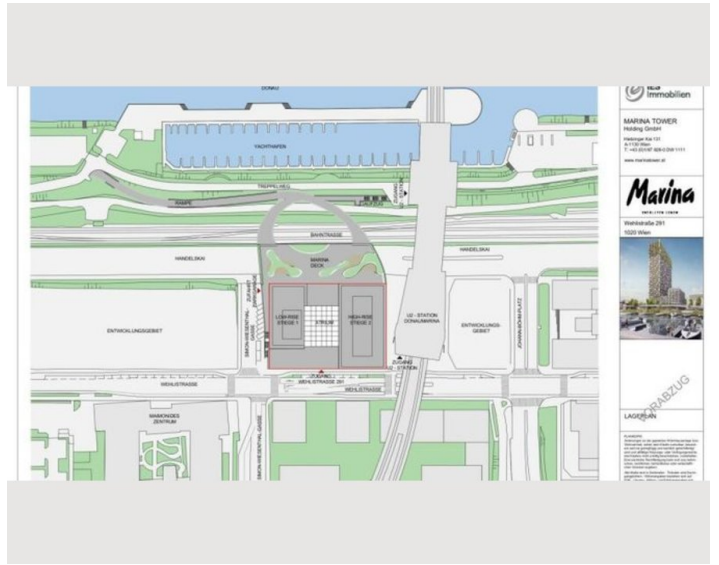
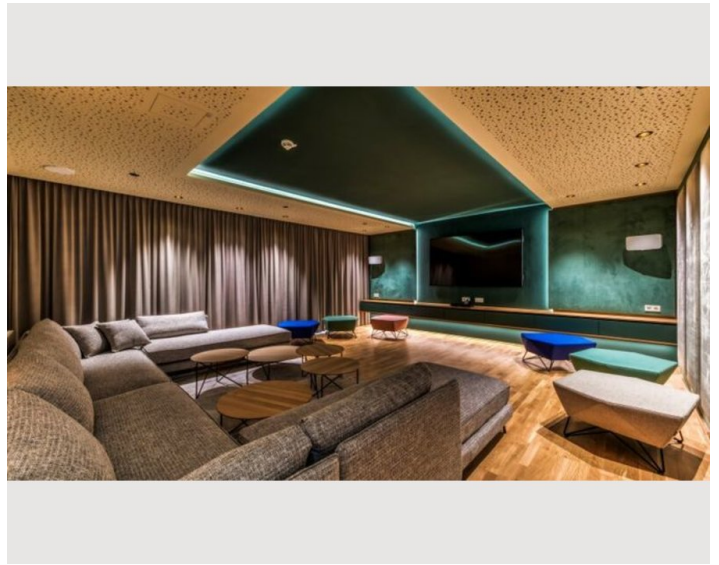
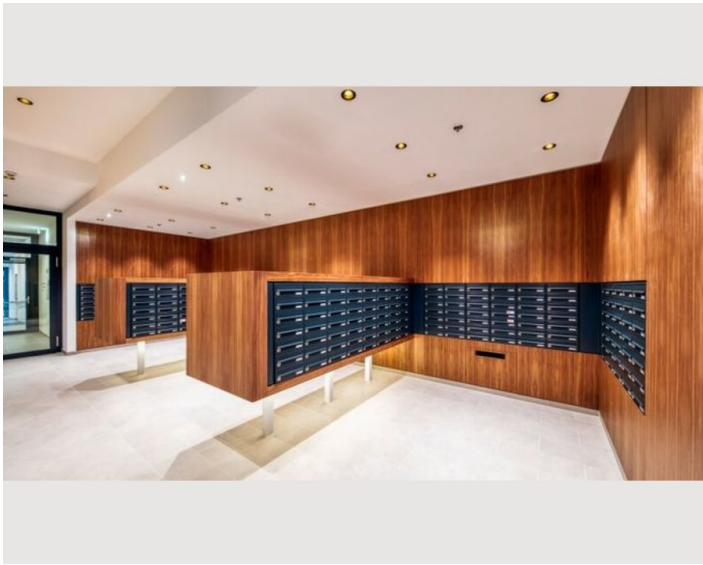













Video

Goto Video




Infrastructure

 Direct connection to the airport

 The subway line U2 Danube Marina directly at the building

 The subway line U2 Danube Marina directly at the building

 at the entrance of the building

1 minute to the U2

1 minute to the Airport City Bus

5 minutes to the stadium or e.g. barbecue areas on the Danube Island

10 minutes to the fair, university of economics or Prater

15 minutes to the city center, UNO-City or airport

With our apartment you benefit from an ideal location in Vienna's 2nd district with direct access to the Danube and marina. Directly in the building on the first floor is a supermarket, as well as a bakery and direct access to the subway U2 stop Donau Marina, which brings you in a few minutes to the historic center of Vienna. Directly in front of the building is a bus stop, as well as the stop of the Airport City Bus, which will take you in 15 minutes in the airport.

Practical are also the gym integrated in the building and the kindergarten. In the immediate vicinity of the building there is a paid parking for your car (5 EUR/24h).

Some of the services offered by Marina Tower: (CONVENIENCE)

CATERING STATION

GUEST LOUNGE

HOME CINEMA

DOTHOME

PARCEL LOCKER

CHILDREN'S PLAYGROUND

DOG AND BICYCLE WASHING STATION

Location

