



2 ROOM APARTMENT, 5421 ADNET

Penthouse Apartment in Adnet near Hallein

Object number: NZDJ1

[View and rent online](#)

Unique shared apartment opportunity in a spacious 70m² penthouse in a rural area near a romantic stream and with a magnificent mountain view. The landlord/co-tenant is often away, so the apartment is available for sole use approx. 70% of the time.

Period	25/06/ - 25/07/2026
Number of persons	2
Total incl. VAT.	€ 1.183,38
Security deposit	€ 800,00

**Living space**58m²**Maximum occupancy**

1 Person

**Shared Accommodation** 

1 Shared bathroom

**2. floor****Check-in**

15:00 - 16:00 Clock

**Check-out**

09:00 - 11:00 Clock

Sleeping options

Descripton of accommodation

53 m² of living space with a large roof terrace are available for rent, including:

17 m² bedroom for personal use with key

1 parking space to the left of the entrance door for personal use

For shared use with one other person:

1 x entrance hall

1 x kitchen/living room

1 x bathroom/WC with bathtub, shower, washing machine

70 m² roof terrace, fire pit & grill

The apartment is located in a building with a total of 7 parties. It is a friendly, young community. A basement is available to the entire community for laundry and bicycles.

The apartment is bright, cozy, and fully equipped. The 4m high rooms with sloping ceilings give it a loft-like character. Underfloor heating and a Swedish stove guarantee cozy warmth on cold days.

The 17m² room is equipped with a spacious wardrobe and a large, comfortable bed with a high-quality natural rubber mattress. This arrangement cannot be changed.

The white mirror cabinet on the left can be moved if necessary to make room for a desk, additional dining table, or other preferences. (Alternative furniture is available or can be brought along). The room has its own access to the roof terrace.

The office and bedroom (marked as "guest room" on the floor plan) and the attic are not included in the rental - it's the owner's space.

By arrangement: shared use of piano, workshop, bicycle, e-scooter, grocery shopping, laundry service, cleaning, firewood

Equipment & Features



Basic equipment

- Terrace
 - Music system/docking station
 - Private washing machine
 - Towels
 - Vacuum cleaner
 - Cleaning utensils
 - Roof-terrace
 - TV
 - Bedclothes
 - Parking space
 - Iron & ironing board
 - Hairdryer
-



Fireplace

- Charcoal grill
 - Sweden Stove
 - Open fireplace
-



First supply

- Toilet paper
 - Soap
 - shampoo
 - Fridge filling on request
-



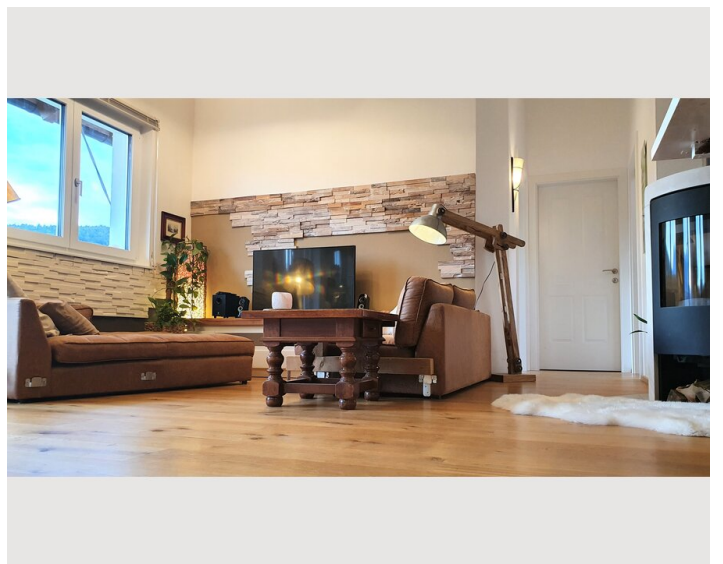
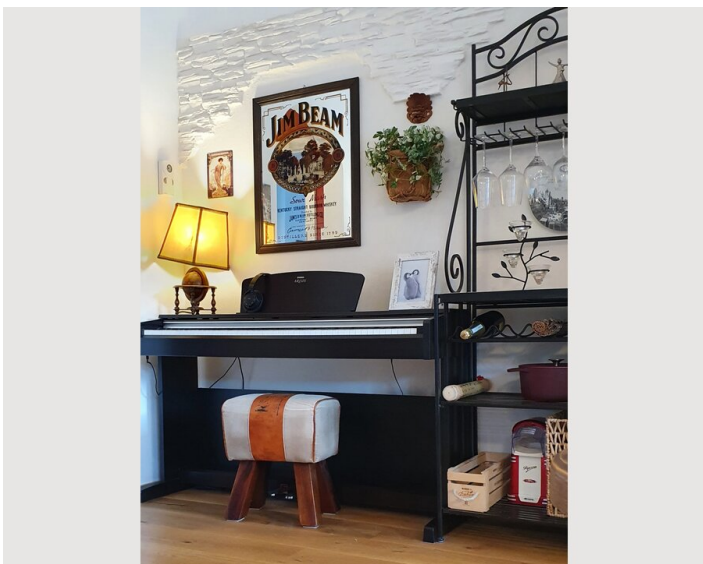
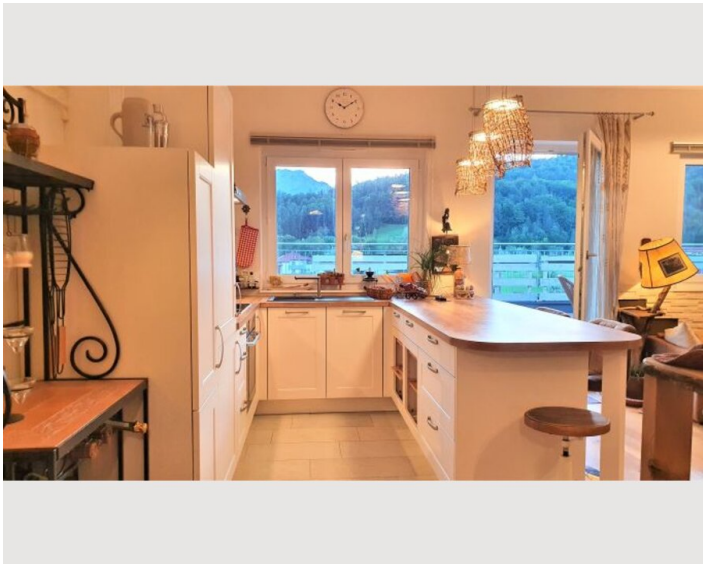
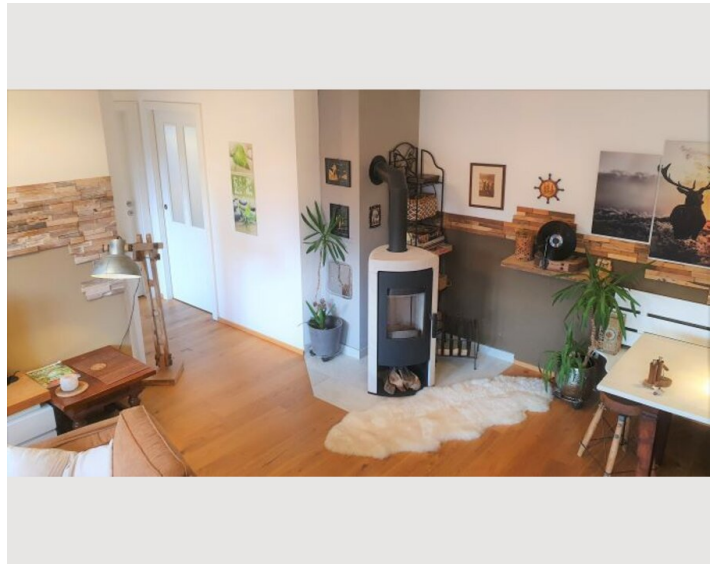
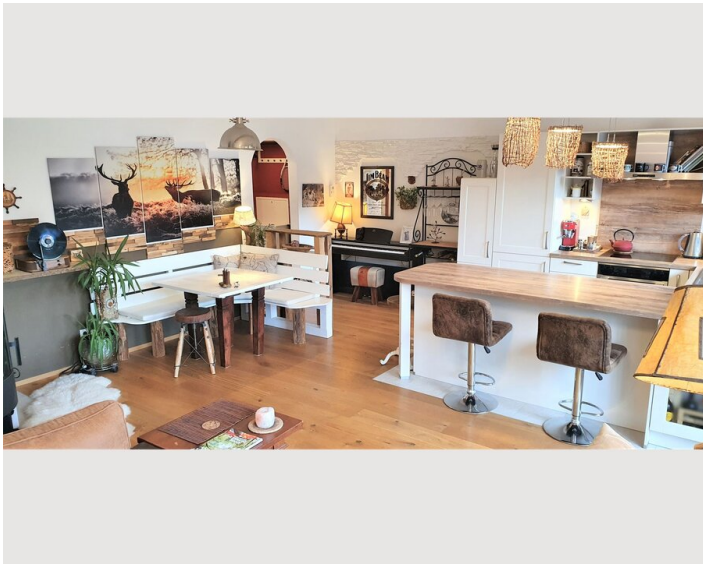
Kitchen

- Shared kitchen
- Glasses/Tableware
- Dishwasher
- Cooking utensils
- Coffee machine

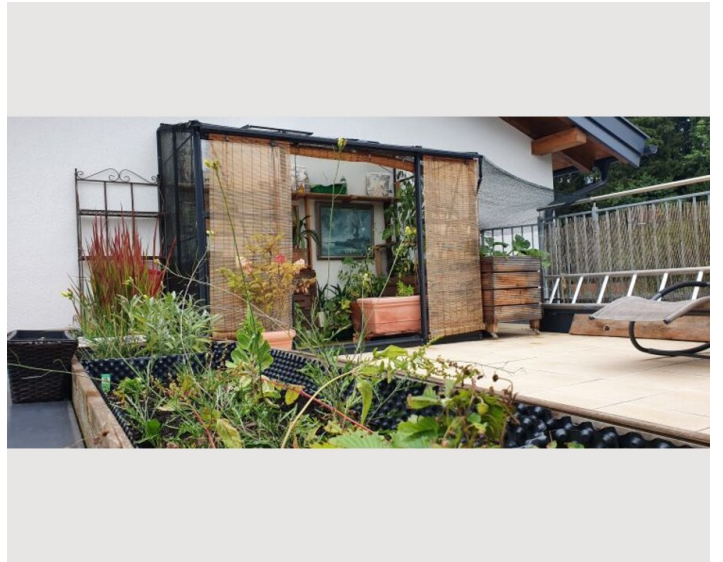
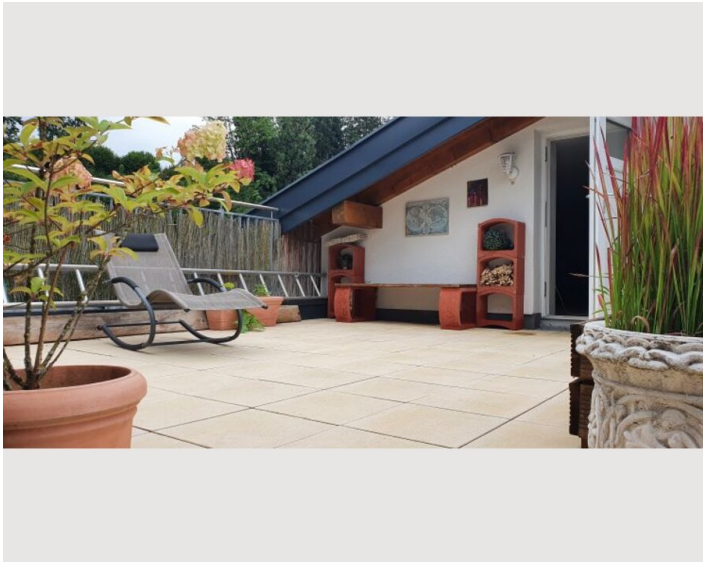
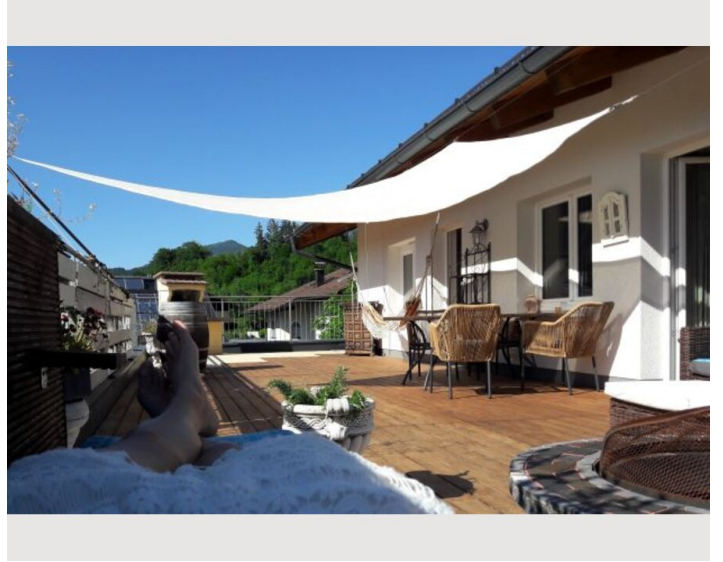
Informations

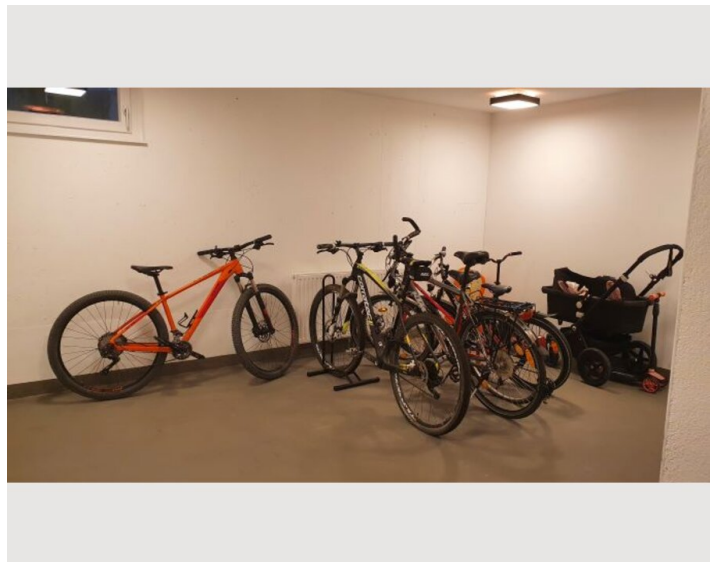
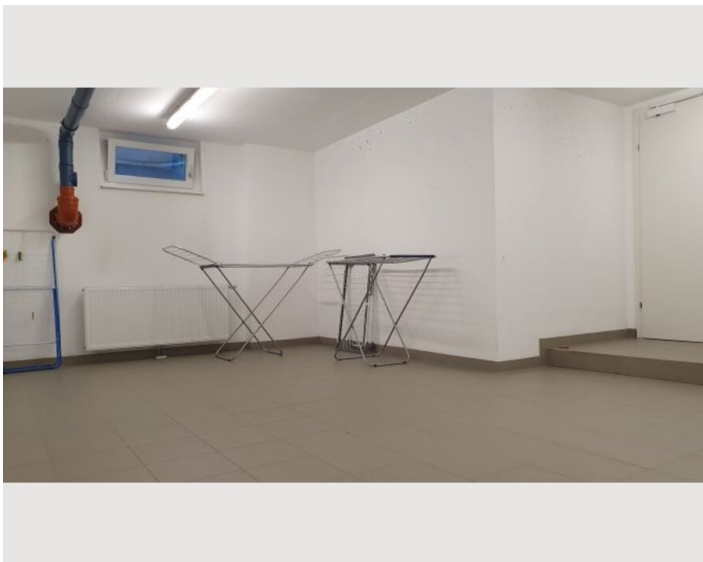
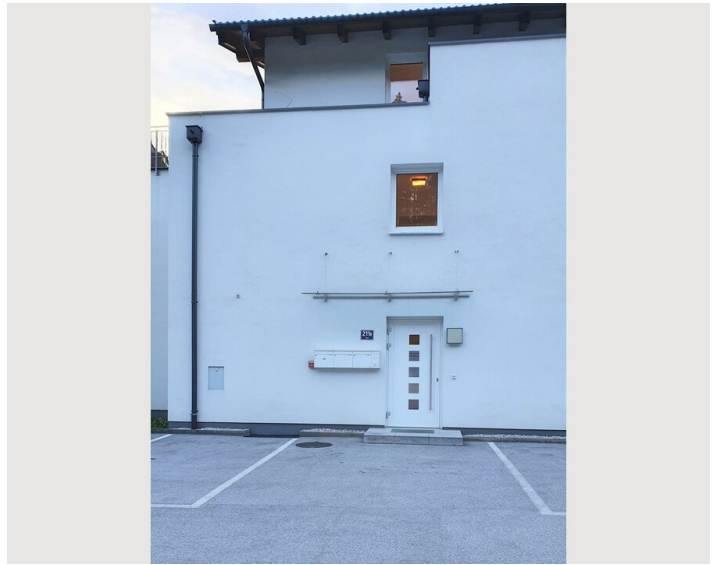
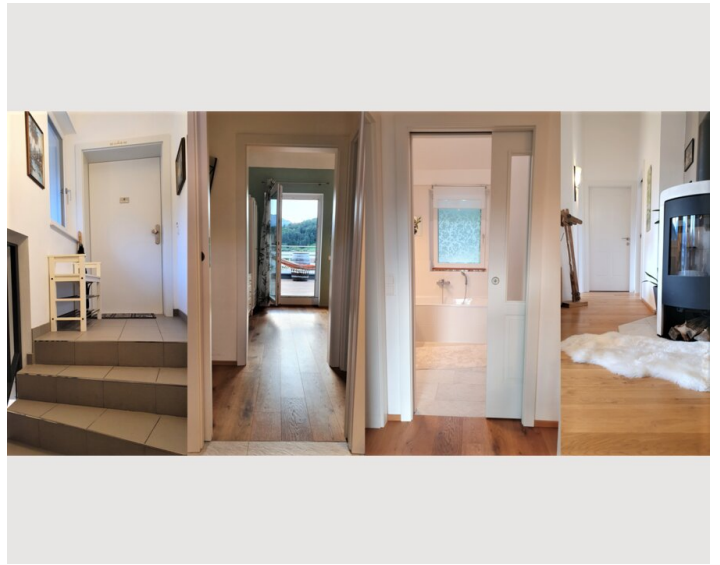
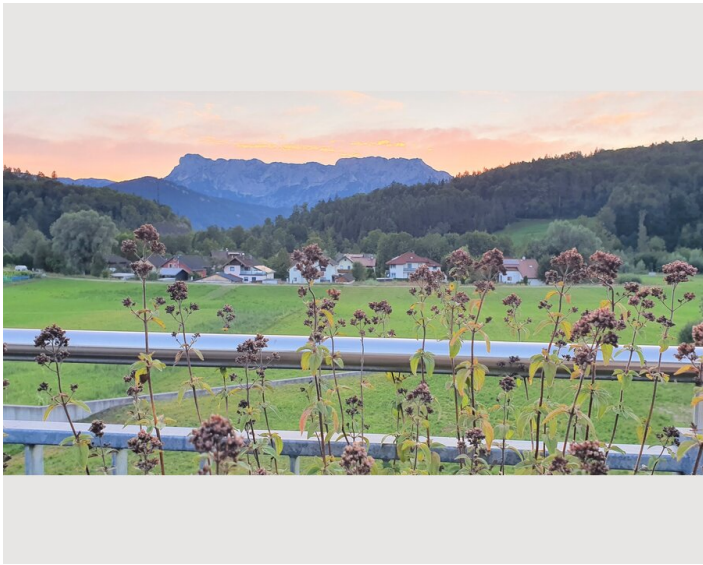
- Smoking not allowed
- Pets forbidden
- Bicycle room free of charge
- Desk/Workplace
- Regular cleaning at extra cost

Picture gallery











Infrastructure

 5min walking

 3,3km

 15 min walking

 20km

You can cycle along a beautiful, traffic-calmed route and reach the centre of Hallein in about 10 minutes. The barrier lake "Wiestalstausee" is refreshing and clean and great for paddling and fishing. It is a nice short mountain bike trip only 5.5km away from the flat.

The next attractive family skiing and ski-touring or hiking area in is only 15 minutes away by car.

Only 100m away from the accommodation a beautiful, lonely and quiet stretch of river to dream and fish.

A wonderful running trail leads through the moss "Adneter Moos"

High above Adnet, 2 km away, you can visit the Adenter marble quarries with their fitness and adventure course.

Location

