



2 ZIMMER WOHNUNG, 4881 STRASS IM ATTERGAU

## B4 Rustic family apartment

Object number: B4

[View and rent online](#)

<b>Period</b>	18/07/ - 18/08/2025
<b>Number of persons</b>	2
<b>Total</b> incl. VAT.	€ 1.067,74
Security deposit	€ 800,00

The apartment house Sagerer is located halfway between Mondsee and Attersee, in a small quiet side valley, in the middle of nature, nestled between Auerwaldbach, meadows and the edge of the forest.



### Living space

50m<sup>2</sup>



### Maximum occupancy

4 Persons



### Complete accommodation <sup>?</sup>

1 private bathroom 1 Separated bedroom 1 Living-Sleepingroom



### 1. floor



### Check-in

15:00 - 20:00 Clock



### Check-out

07:00 - 10:00 Clock

## Sleeping options

### Sleeping room



1x Double bed (1,80 m x 2 m)

### Living and sleeping



1x Sofa bed (2 persons)

## Descripton of accommodation

The light-filled family apartment is located on the 1st floor. It has a fully equipped kitchen, spacious living room, spacious bedroom and separate bathroom with spacious balcony

## Equipment & Features



### Basic equipment

- Balcony
- Internet/Wifi
- Community washing machine
- Bedclothes
- Private toilet
- Vacuum cleaner
- Garden sharing
- TV
- Community dryer
- Towels
- Private parking space
- Hairdryer



### Fireplace

- Charcoal grill



### First supply

- Toilet paper
- Soap



### Kitchen

- Private kitchen
- Glasses/Tableware
- Cooking utensils
- Filter coffee

## Informations

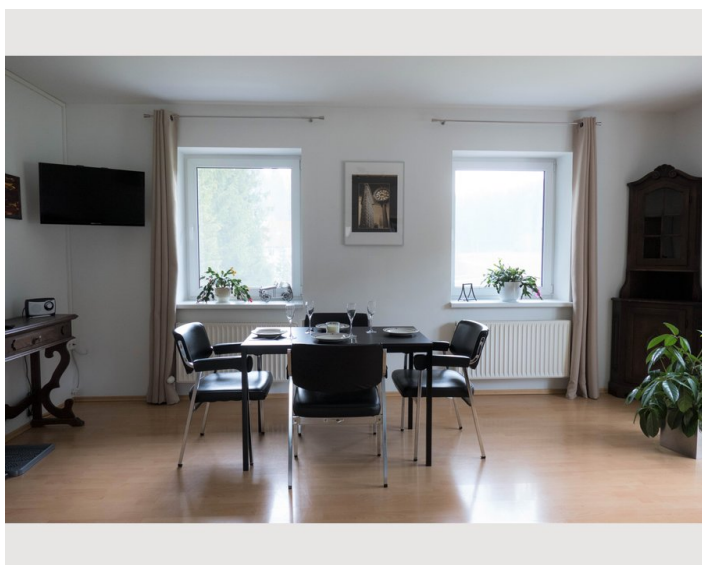
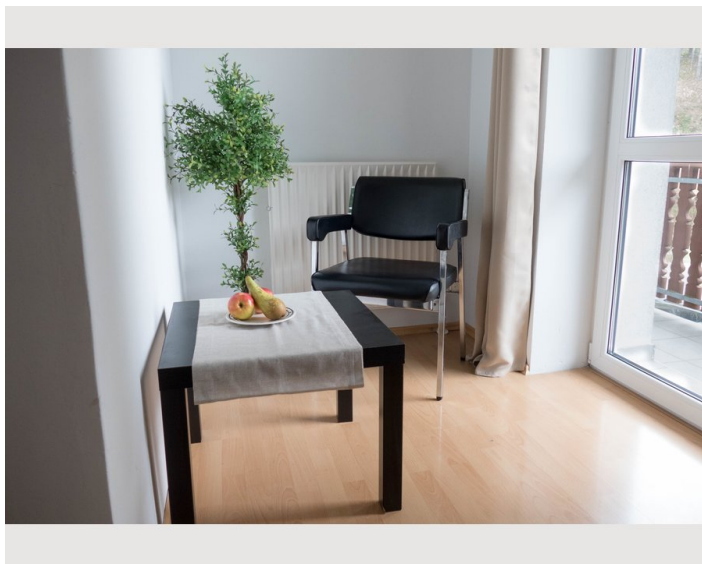
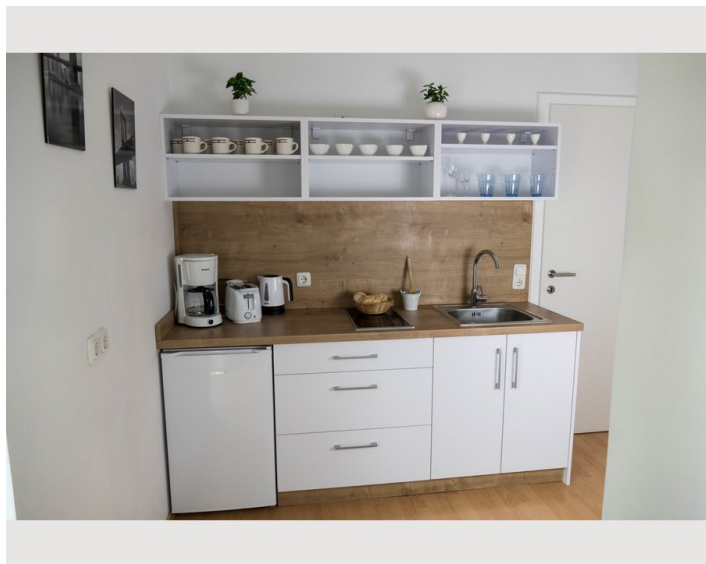
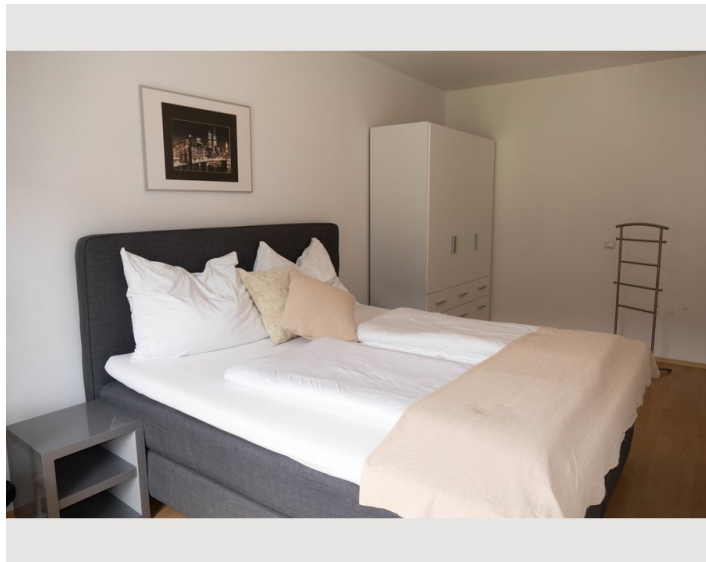
- Suitable for construction workers
- Smoking not allowed
- Regular cleaning at extra cost
- Suitable for children
- Pets forbidden
- Bicycle room free of charge

## Additional services

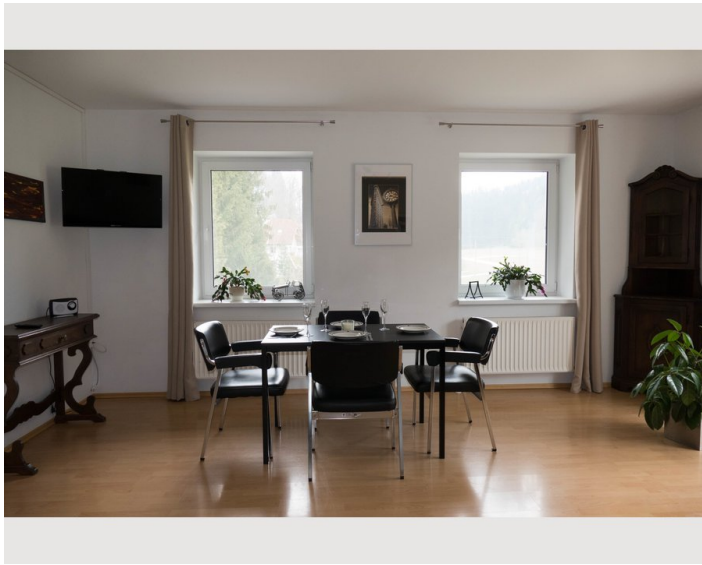
- Cleaning every 2 weeks (€ 100,00)

All prices are gross per month - billing is done directly with the lessor.

## Picture gallery







### Infrastructure

📍 3 minutes by car 3,5 km

🏠 5 minutes by car 3,9 km

🚶 13 minutes walk 1.1 km

🚗 7 minutes by car 4,6 km

🚗 36 minutes by car 50,9 km Salzburg

🚗 56 minutes by car 83 km Linz

In only 5 - 10 minutes you can reach the Attersee or the Mondsee, St.Georgen for shopping or inns.

In only 36 minutes you can reach Salzburg - the historical and cultural city of Mozart, the festival and the Sound of Music.

In winter you can enjoy two family-friendly ski centers Kronberg and Oberaschau nearby.

Location

