

Studio apartment, Elixhausen

Apartment in Elixhausen on the outskirts of Salzburg for your temporary homebase

Object number: TREK5

[VIEW AND RENT ONLINE](#)

This one room apartment is situated on the second floor of a one family house (entrance through the family house) in Elixhausen and is equipped with all necessary amenities. There is room for 1 person and the equipment is very comfortable.

Period	04/05/ - 04/06/2024
Number of persons	2
Total incl. VAT.	€ 1.004,38
Security deposit	€ 800,00



Living space

37m²



Maximum occupancy

1 Person



Complete accommodation ?

1 private bathroom 1 Living-Sleepingroom



2. floor



Check-in

15:00 - 18:00



Check-out

08:00 - 13:00

Sleeping options

Living and sleeping



1x Double bed (1,40 m x 2 m)

Descripton of accommodation

The room is very bright and high and you have a wonderful view of the surrounding mountains.

There is also a bathroom with a shower and a toilet/bidet.

The garden of the house can be used as well.

A parking space is directly in front of the house.

Please note, we are a non-smoking household.

Equipment features



Basic equipment

- Garden sharing
- TV
- Bedclothes
- Private toilet
- Vacuum cleaner
- Internet/Wifi
- Community washing machine
- Towels
- Private parking space
- Iron & ironing board



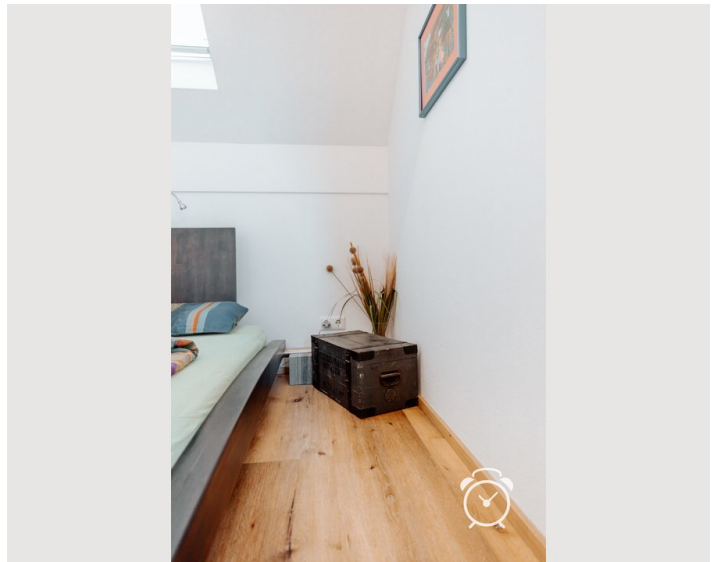
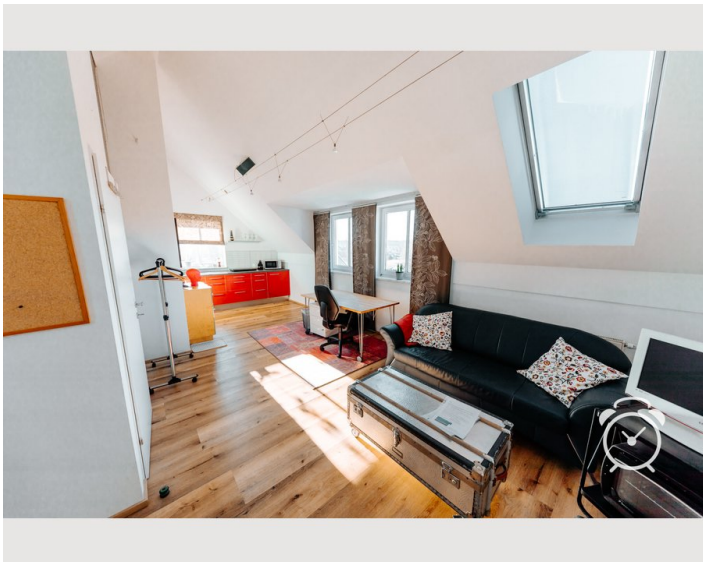
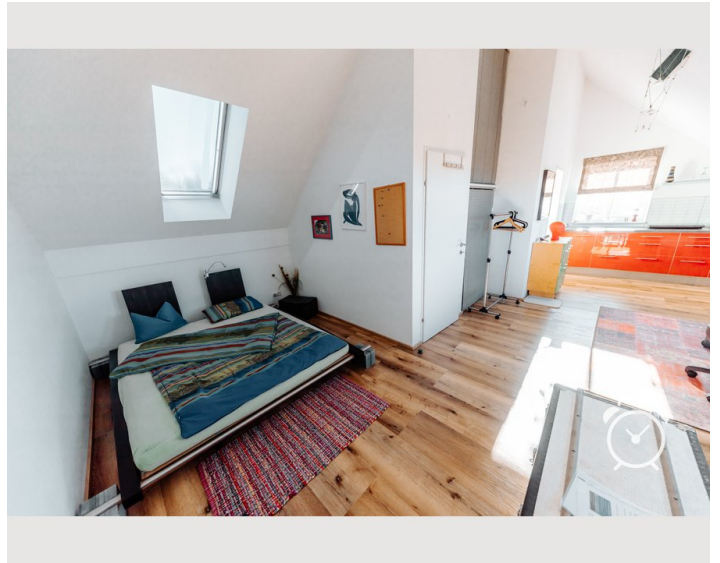
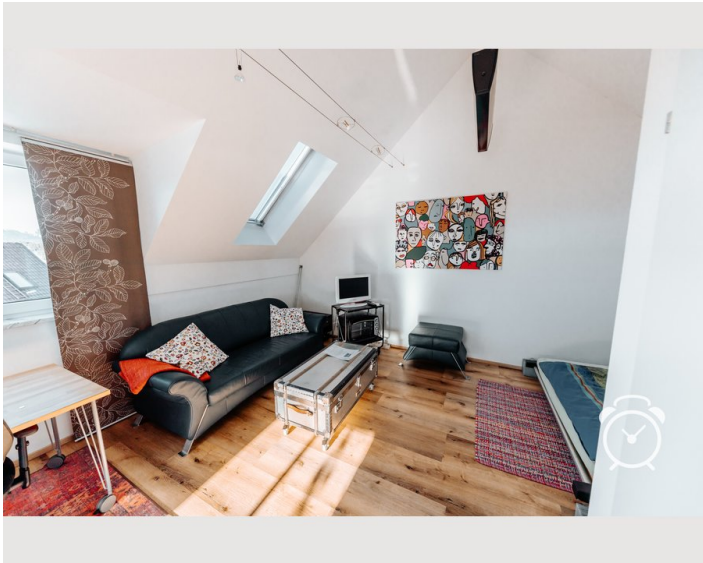
Kitchen

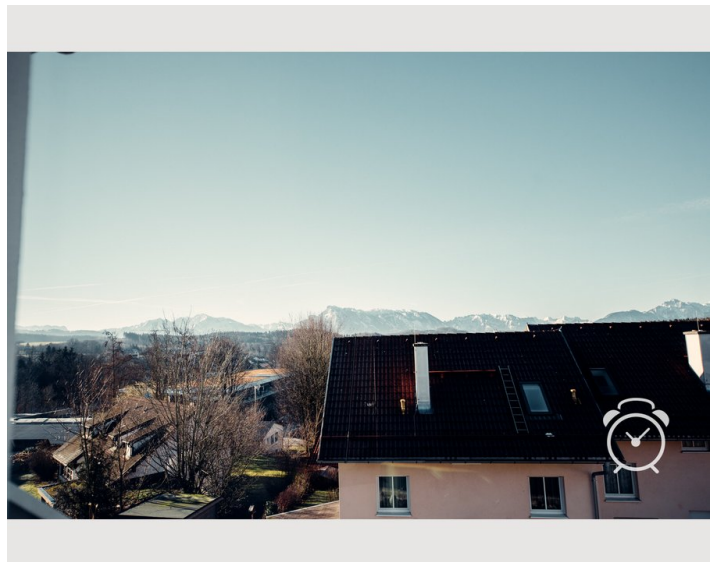
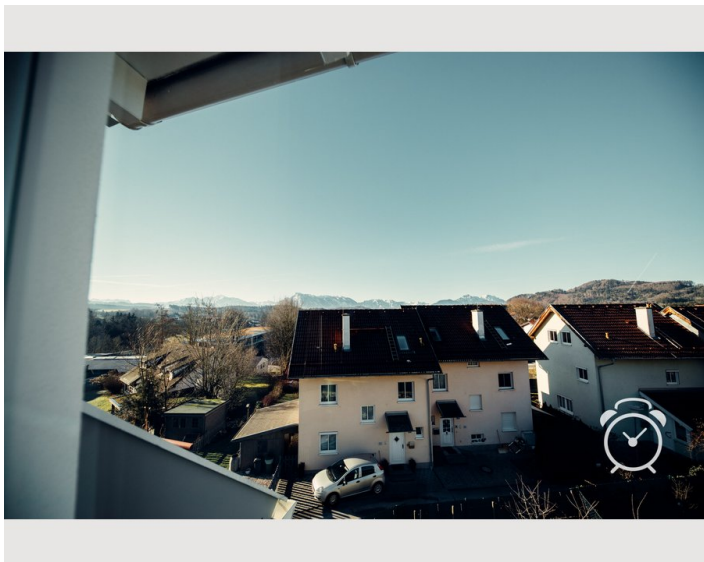
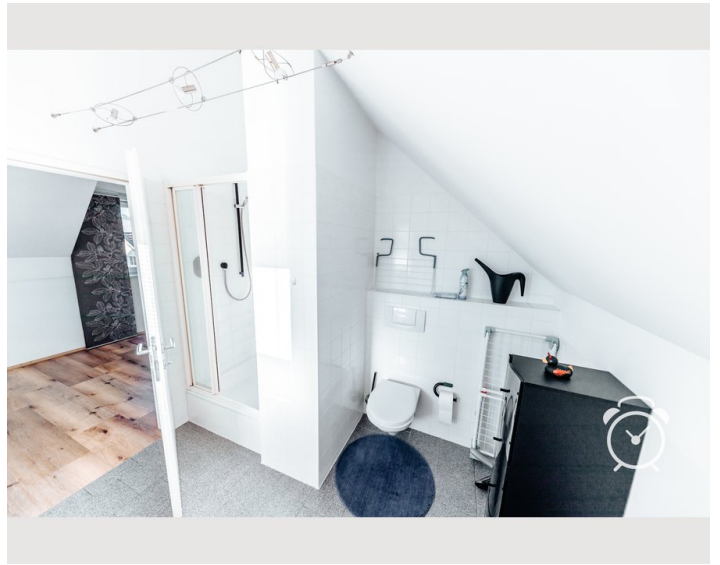
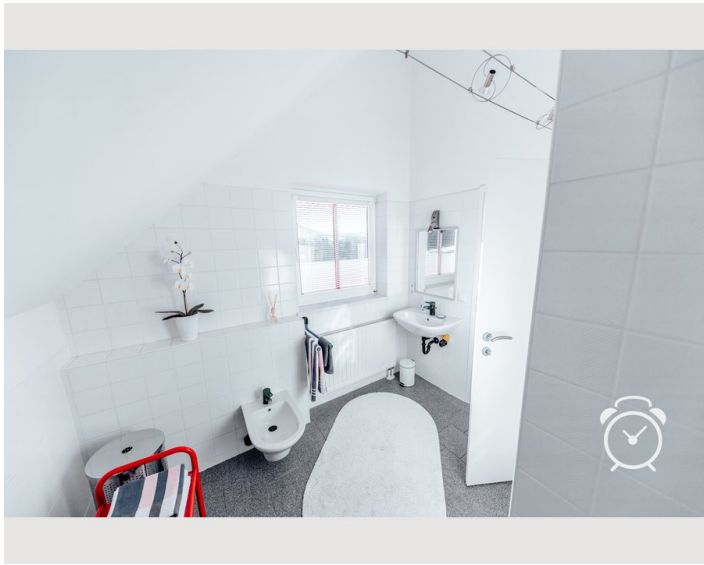
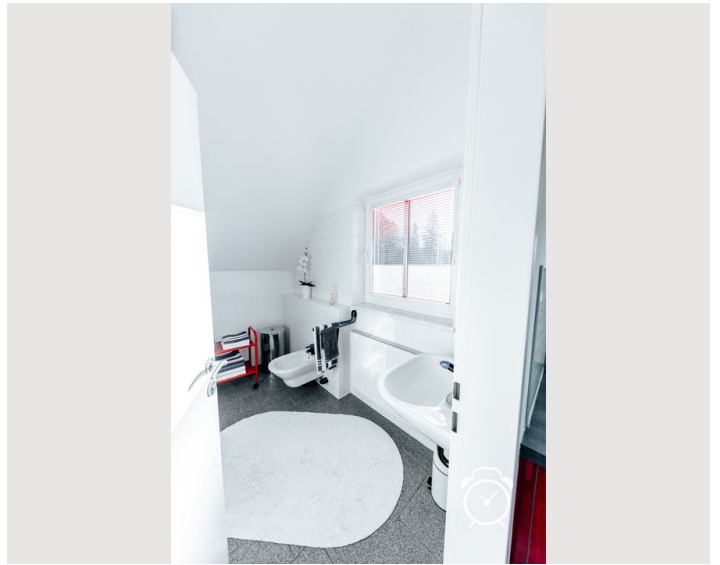
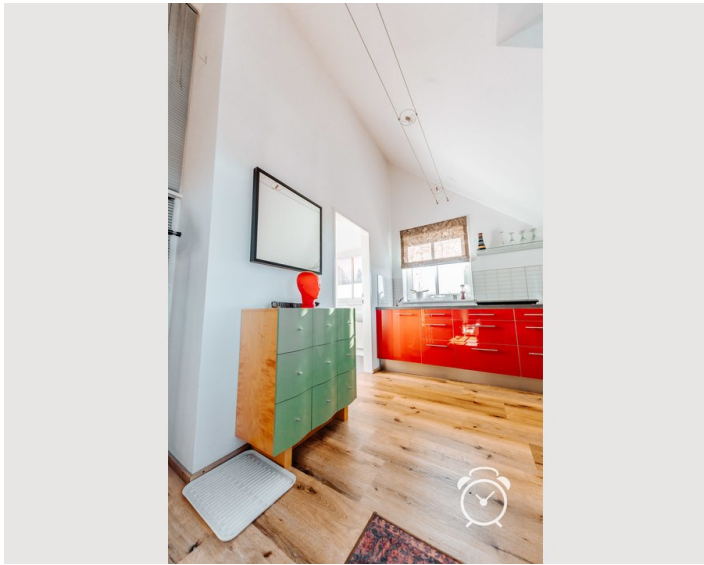
- Private kitchen
- Glasses/Tableware
- Microwave
- Cooking utensils
- Espresso machine

Informations

- Smoking not allowed
- Pets forbidden
- Desk/Workplace

Picture gallery





Video

GOTO VIDEO



Infrastructure



Our village is conveniently located with good bus connections.

You have only 8 km to the city centre, in 7 km you are at the main railway station and after only 5 km you reach the motorway exit Salzburg Nord.

It is 12 km to the Salzburg Airport and in 7 km you are at the exhibition grounds.

After only 5 km you have reached the Salzburg Seeland.

In about 30 minutes you can reach the city by bike (continuous cycle path).

In Elixhausen there are two supermarkets, bakery, butcher's shop, doctors, pharmacy and several restaurants.

Location

