



2 ZIMMER WOHNUNG, 4820 BAD ISCHL

Terrace apartment, 60 m², Bad Ischl

Object number: HUBQ1

[View and rent online](#)

First class and quietly located ground floor apartment, close to the center and yet not far from a recreation area and the beautiful Traun River. Summer and winter numerous activities possible (climbing hall, tennis courts, hiking possibilities, cable

Period	21/07/ - 21/08/2025
Number of persons	2
Total incl. VAT.	€ 1.359,00
Security deposit	€ 1.000,00

**Living space**

60m²

**Maximum occupancy**

3 Persons

**Complete accommodation** 

1 private bathroom 2 Shared bedrooms

**Ground floor****Check-in**

12:00 - 22:00 Clock

**Check-out**

09:00 - 14:00 Clock

Sleeping options**Living and sleeping 1**

1x Double bed (1,80 m x 2 m)

Living and sleeping 2

1x Sofa bed (2 persons)

Descripton of accommodation

Comfortably furnished apartment with south/west terrace (17 m²) incl. seating set, The solid wood furniture gives this apartment a particularly homey character. The apartment also has a spacious bedroom with built-in wardrobes and a study and reading corner. The bathroom has a tub with sliding glass wall and the washer/dryer.

An ideal place to stay for those seeking relaxation, but also for those who work privately and want to enjoy the flair of the "imperial city" with its cafes, restaurants and many sights. Numerous lakes and mountains are in the immediate vicinity; the city of Salzburg is 55 km away, Hallstatt can be reached in 20 minutes and is also worth a visit.

Translated with www.DeepL.com/Translator (free version)

Equipment & Features



Basic equipment

- Terrace
- Private washing machine
- Bedclothes
- Private toilet
- Vacuum cleaner
- Cleaning utensils
- Internet/Wifi
- Private dryer
- Towels
- Private parking space
- Iron & ironing board



First supply

- Toilet paper
- Soap



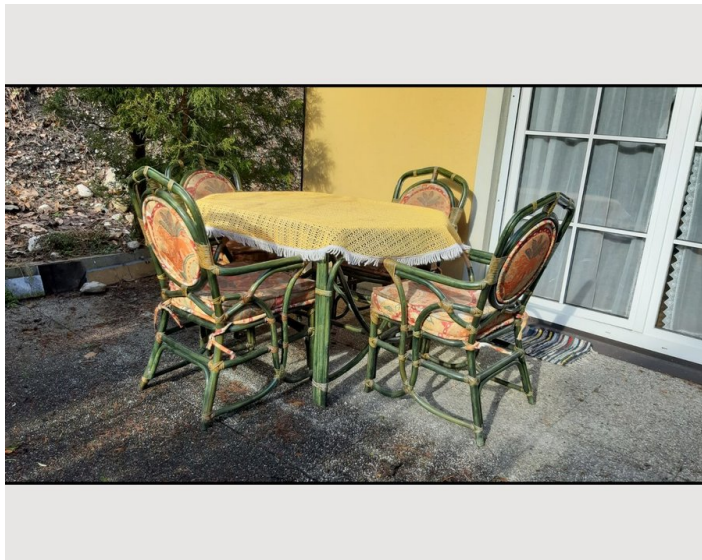
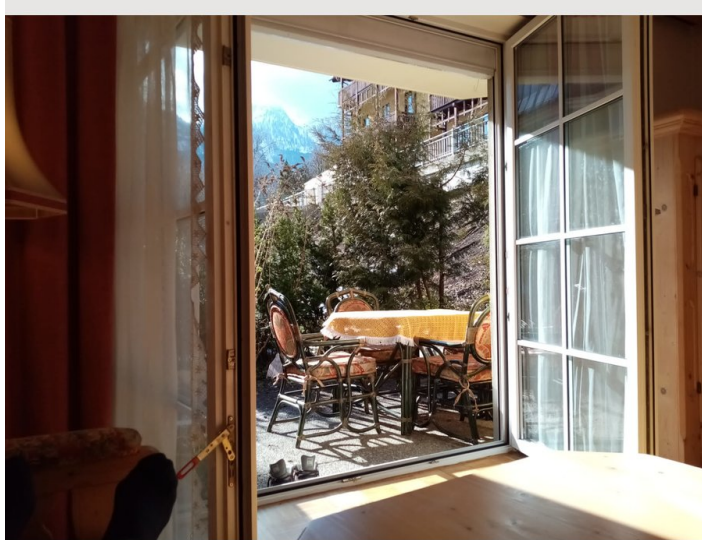
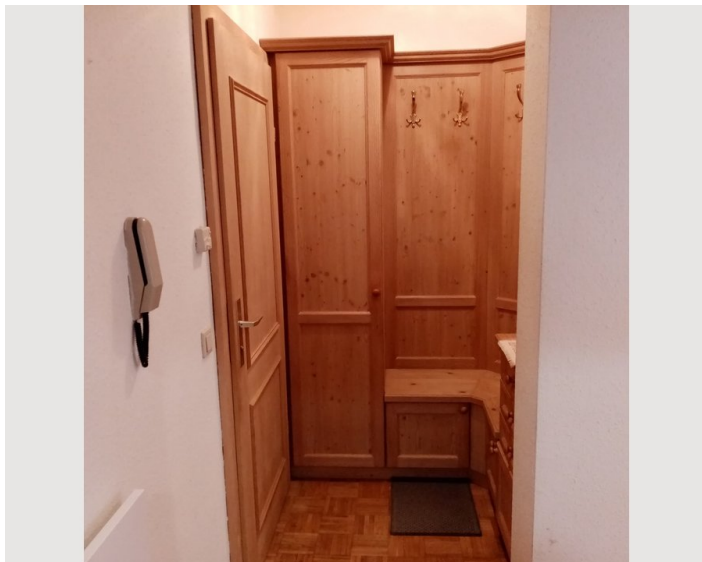
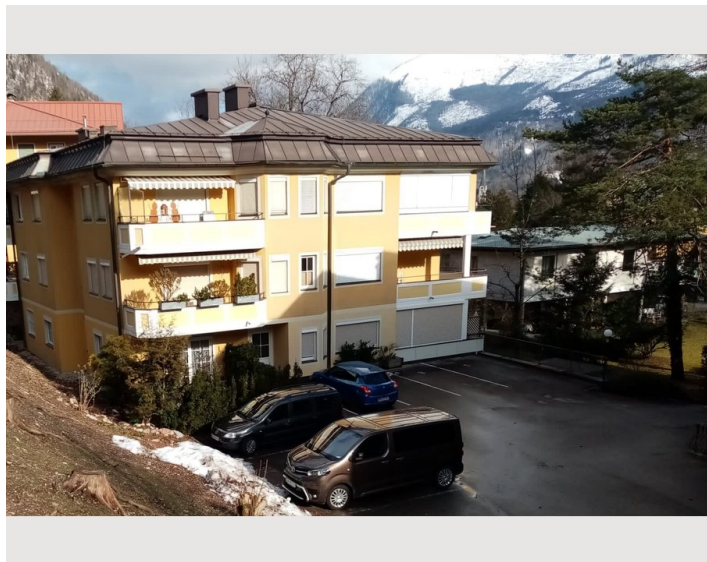
Kitchen

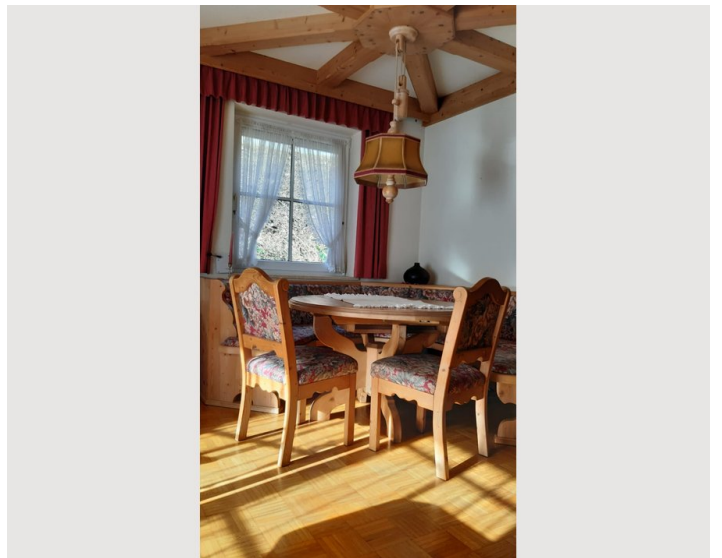
- Private kitchen
- Glasses/Tableware
- Dishwasher
- Cooking utensils
- Filter coffee
- Microwave

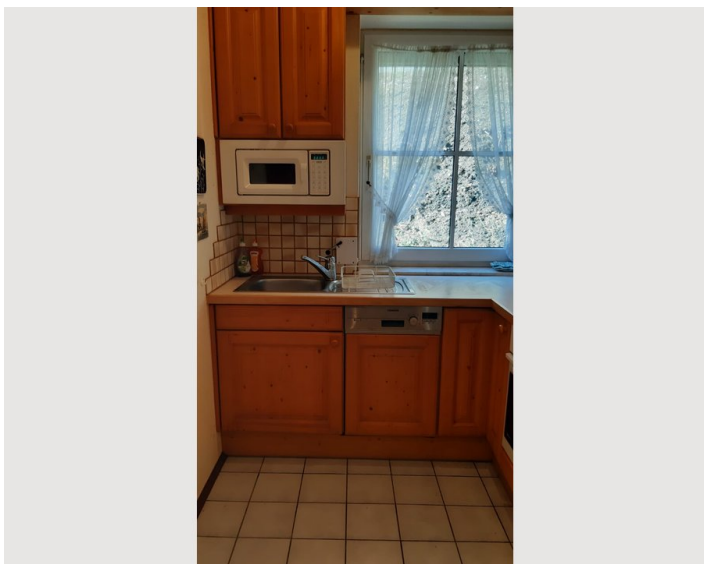
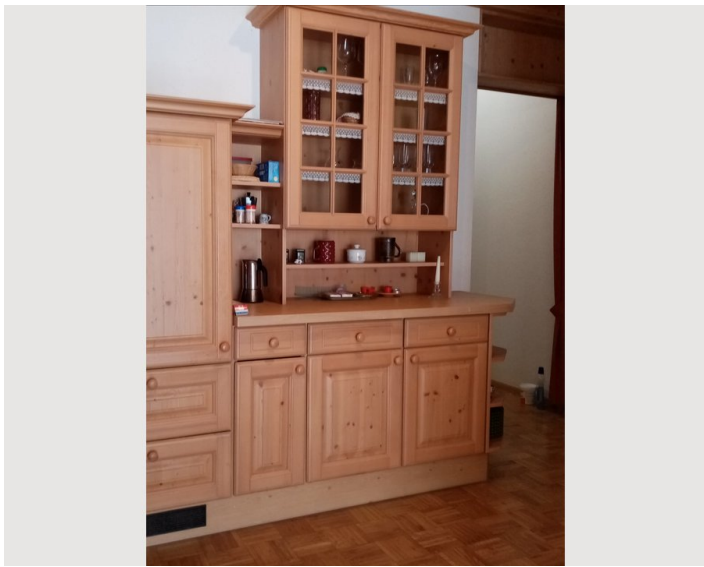
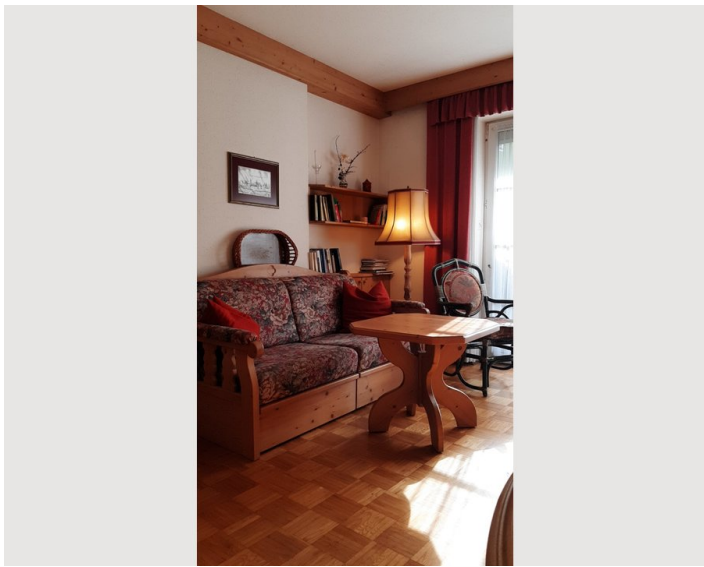
Informations

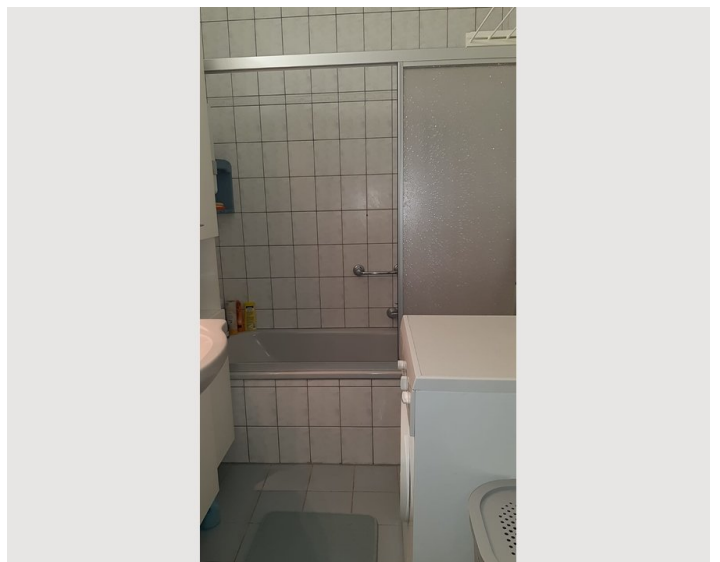
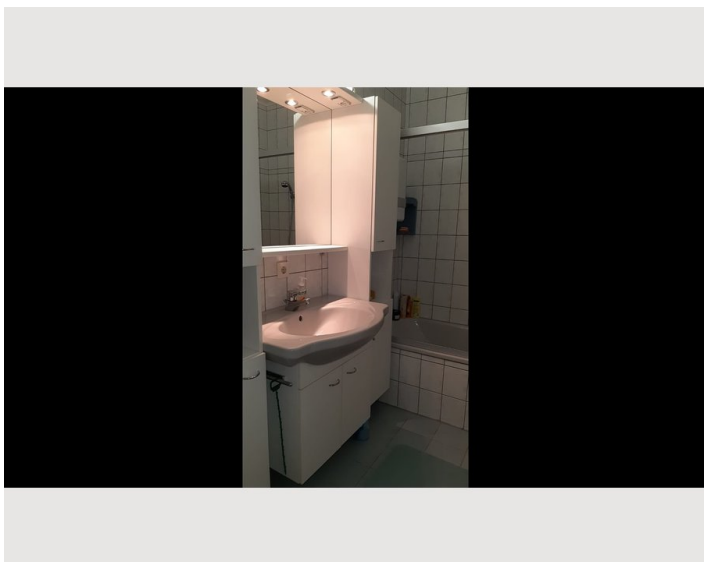
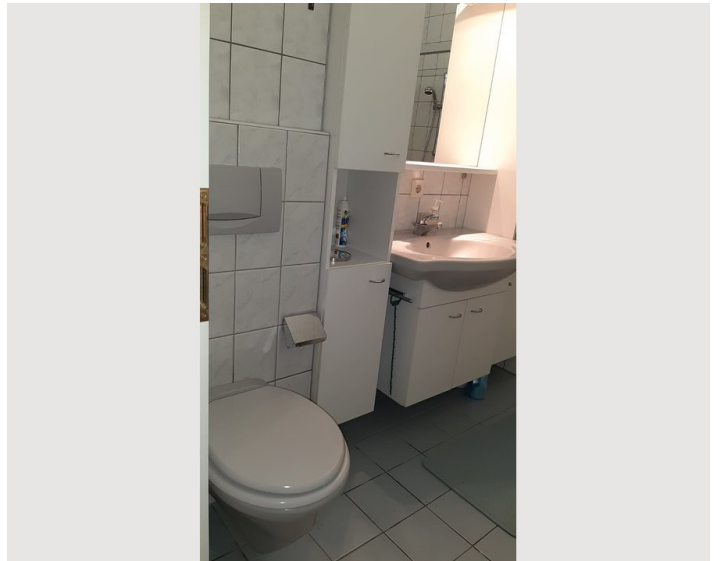
- Suitable for construction workers
- Smoking not allowed
- Private entrance
- Regular cleaning at extra cost
- Suitable for children
- Desk/Workplace
- Pets on request
- Bicycle room free of charge

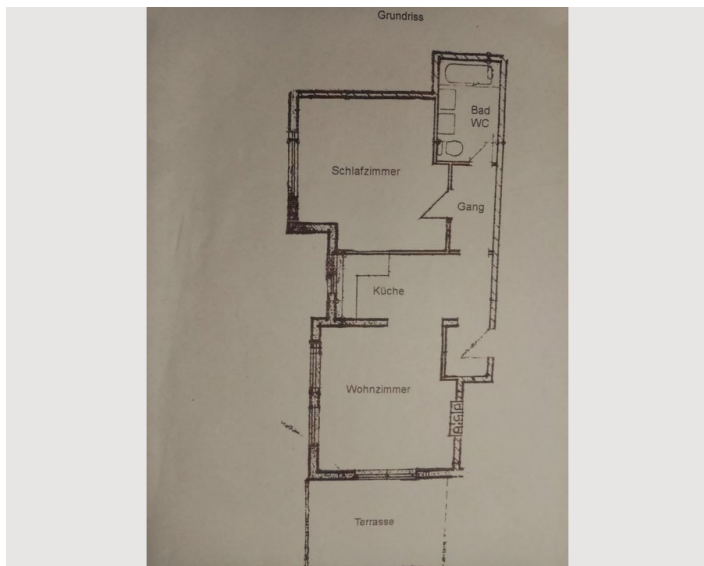
Picture gallery
















Infrastructure

 2 minutes walk

 1 hour by car

 15 minutes walk

 10 minutes walk

 5 minutes walk

Stores, pharmacies as well as the train station are within 5 - 10 minutes walking distance.

Location

